



NIKE TEAM SPORTS 2013/2014

WOMEN'S LACROSSE

**JUST
DO
IT.** 
NIKETEAM.COM



WOMEN'S LACROSSE

- 2 STOCK
- 6 DIGITAL
- 11 CUSTOM
- 13 FOOTWEAR
& ACCESSORIES



578462

CUTBACK RACERBACK JERSEY

\$40.00

SIZES: XS, S, M, L, XL, 2XL

OFFER DATE: 12/01/12
END DATE: 04/01/15

Racerback game jersey with lightweight stretch knit fabric on main body and anatomically placed lightweight stretch mesh on back for maximum breathability where needed most. Contrast trim at neck and arm holes. Body width: 17.25", Body length: 24.75" (size medium).

Part of Stock Embellishment Program.

FABRIC: 100% polyester.

012 Black/White/(White)	100 White/White/(Black)	342 Dark Green/White/(White)
420 Navy/White/(White)	453 Light Blue/White/(White)	494 Royal/White/(White)
546 Purple/White/(White)	612 Cardinal/White/(White)	658 Scarlet/White/(White)

NEW DRI-FIT



578464

CUTBACK KILT

\$35.00

SIZES: XS, S, M, L, XL, 2XL

OFFER DATE: 12/01/12
END DATE: 04/01/15

Game kilt with lightweight stretch knit fabric and premium extra-wide waistband with drawcord for maximum comfort, performance, and fit. Kilt does not have a built in short. Hip width: 20", Back length: 15" (size medium).

FABRIC: 100% polyester.

012 Black/White/(White)	100 White/White/(Black)	342 Dark Green/White/(White)
420 Navy/White/(White)	453 Light Blue/White/(White)	494 Royal/White/(White)
546 Purple/White/(White)	612 Cardinal/White/(White)	658 Scarlet/White/(White)

NEW DRI-FIT



519543

RESPECT S/S JERSEY

\$35.00

SIZES: XS, S, M, L, XL, 2XL

OFFER DATE: 12/01/12
END DATE: 10/01/15

Flatback mesh knit game jersey with contrast neck and sleeve panels. Embroidered Swoosh design trademark. Body width: 19.25", Body length: 25" (size medium).

Part of Stock Embellishment Program.
Part of Response Program.

FABRIC: 100% polyester.

012	Black/White/(White)	100	White/White/(Black)	342	Dark Green/White/(White)
420	Navy/White/(White)	494	Royal/White/(White)	546	Purple/White/(White)
612	Cardinal/White/(White)	658	Scarlet/White/(White)	670	Dark Maroon/White/(White)

Youth #519546 / XS-XL / \$30.00 / Body width: 16.5", Body length: 22.5" (size medium)

Y



519544

RESPECT S/L JERSEY

\$32.00

SIZES: XS, S, M, L, XL, 2XL

OFFER DATE: 12/01/12
END DATE: 10/01/15

Flatback mesh knit game jersey with contrast neck and sleeve panels. Embroidered Swoosh design trademark. Body width: 18.75", Body length: 25" (size medium).

Part of Stock Embellishment Program.
Part of Response Program.

FABRIC: 100% polyester.

012	Black/White/(White)	100	White/White/(Black)	342	Dark Green/White/(White)
420	Navy/White/(White)	494	Royal/White/(White)	546	Purple/White/(White)
612	Cardinal/White/(White)	658	Scarlet/White/(White)	670	Dark Maroon/White/(White)

Youth #519547 / XS-XL / \$28.00 / Body width: 16.5", Body length: 22.5" (size medium)

Y



519545

RESPECT SHORT

\$25.00

SIZES: XS, S, M, L, XL, 2XL

OFFER DATE: 12/01/12
END DATE: 10/01/15

Flatback mesh game short with contrast self fabric piping on sides. Embroidered Swoosh design trademark. Internal drawcord. Hip width: 21.5" (size medium), Inseam length: 5" (all sizes).

Part of Response Program.

FABRIC: 100% polyester.

012	Black/White/(White)	100	White/White/(Black)	342	Dark Green/White/(White)
420	Navy/White/(White)	494	Royal/White/(White)	546	Purple/White/(White)
612	Cardinal/White/(White)	658	Scarlet/White/(White)	670	Dark Maroon/White/(White)

Youth #519548 / XS-XL / \$20.00 / Hip width: 17.5", Inseam length: 5" (size medium)

Y



578463

RESPECT KILT

\$25.00

SIZES: XS, S, M, L, XL, 2XL

OFFER DATE: 12/01/13
END DATE: 10/01/15

Flatback mesh game kilt with contrast self fabric piping on sides. Embroidered Swoosh design trademark. Internal drawcord. Kilt does not have a built in short. Hip width: 20", Back length: 15" (size medium).

Part of Response Program.

FABRIC: 100% polyester.

012 Black/White/(White)	100 White/White/(Black)	342 Dark Green/White/(White)
420 Navy/White/(White)	494 Royal/White/(White)	546 Purple/White/(White)
612 Cardinal/White/(White)	658 Scarlet/White/(White)	670 Dark Maroon/White/(White)

Youth #578465 / XS-XL / \$20.00 / Hip width: 16.5", Back length: 13" (size medium)

NEW DRI-FIT 



399208

RACER REVERSIBLE MESH TANK

\$18.00

SIZES: 2XS/XS, S/M, L/XL, 2XL/3XL

OFFER DATE: 12/01/09
END DATE: 10/01/14

Two-color reversible knit mesh racer back tank top. Nike Team Sports jock tag on lower left hem on colored side of the jersey and embroidered Swoosh design trademark at center upper back on the white side. Body width: 19.5", Body length: 23.25" (size s/m).

FABRIC: 100% polyester.

012 Black/White/(Black)	342 Dark Green/White/(Black)	420 Navy/White/(Black)
453 Light Blue/White/(Black)	494 Royal/White/(Black)	546 Purple/White/(Black)
652 Pink Fire II/White/(Black)	658 Scarlet/White/(Black)	670 Dark Maroon/White/(Black)
713 Volt/White/(Black)	717 Bright Gold/White/(Black)	813 Total Orange/White/(Black)
821 Orange/White/(Black)		



584860

NIKE PRO HYPERCOOL FLASH BRA

\$35.00

SIZES: XS, S, M, L, XL, 2XL

OFFER DATE: 12/01/13
END DATE: 10/01/16

Dri-FIT stretch bra top made of 100% polyester and spandex to pull sweat away to help keep you comfortable and dry. Bonded seams on the straps and sides create a smooth and streamlined look. Open back design offers excellent ventilation, lightweight comfort and a feminine look. Compression fit offers medium support that is ideal for running and other impact activities. Elastic chest band has embossed Nike Pro Design trademark for iconic detail. Body width: 13" (size medium).

FABRIC: 100% polyester.

010 Black/(White)	100 White/(Black)	419 College Navy/(White)
493 Game Royal/(White)	657 University Red/(White)	

NEW DRI-FIT



STOCK EMBELLISHMENT PROGRAM

FULL BLOCK font only



Embellishment Color Options:



Women's Lacrosse - 1 or 2 color

STYLE NUMBER	STYLE NAME	CATALOG PAGE #	LETTER HEIGHT	NUMBER HEIGHT FRONT/BACK	PRINT OPTIONS 1" EMBROIDERY OR PRINTED TEAM NAME	
578462	CUTBACK RACERBACK JERSEY	2	2½"	6"/8"	WILDCATS	
519543	RESPECT S/S JERSEY	3	2½"	6"/8"	10	10
519546	RESPECT S/S JERSEY – YOUTH	3	2"	6"/8"	STRAIGHT ABOVE NUMBER	AVAILABLE WITH SPACE FOR NAME
519544	RESPECT S/L JERSEY	3	2½"	6"/8"		
519547	RESPECT S/L JERSEY – YOUTH	3	2"	6"/8"		

One-Color Screenprint – \$30

Two-Color Screenprint – \$40

578431 CUTBACK RACERBACK DIGITAL JERSEY

\$70.00



SIZES: XS, S, M, L, XL, 2XL

OFFER DATE: 12/01/13

END DATE: 04/01/16

Sublimated game jersey with lightweight stretch knit fabric on main body and anatomically placed lightweight stretch mesh on back for maximum breathability where needed most. Contrast trim at neck and arm holes. Customize with optional Nike Women's Lacrosse checker design in tonal color on back side mesh. Body width: 17.25", Body length: 24.75" (size medium).

FABRIC: 89% polyester/11% spandex.

NEW



578432 CUTBACK DIGITAL KILT

\$50.00



SIZES: XS, S, M, L, XL, 2XL

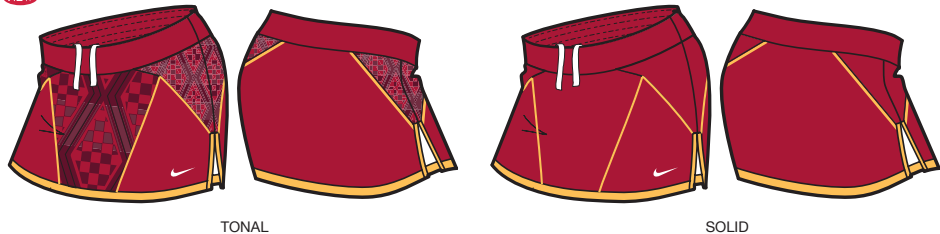
OFFER DATE: 12/01/13

END DATE: 04/01/16

Sublimated game kilt with lightweight stretch knit fabric and premium extra-wide waistband with drawcord for maximum comfort, performance, and fit. Customize with optional Nike Women's Lacrosse checker design in tonal color. Kilt does not have a built in short. Hip width: 20", Back length: 15" (size medium).

FABRIC: 89% polyester/11% spandex.

NEW



578435 DODGE S/S JERSEY

\$50.00



SIZES: XS, S, M, L, XL, 2XL

OFFER DATE: 12/01/13

END DATE: 04/01/16

Sublimated game jersey with contrast trim at neck. Optional player number on left sleeve. Customize with optional Nike Women's Lacrosse checker design in tonal or contrast color. Body width: 17.75", Body length: 24.75" (size medium).

FABRIC: 100% polyester.

NEW



578434 DODGE RACERBACK JERSEY

\$45.00



SIZES: XS, S, M, L, XL, 2XL

OFFER DATE: 12/01/13

END DATE: 04/01/16

Sublimated game jersey with contrast trim at neck and arm holes. Customize with optional Nike Women's Lacrosse checker design in tonal or contrast color. Body width: 17.25", Body length: 24.75" (size medium).

FABRIC: 100% polyester.

NEW



578458 DODGE KILT

\$40.00



SIZES: XS, S, M, L, XL, 2XL

OFFER DATE: 12/01/13

END DATE: 04/01/16

Sublimated lacrosse game kilt with elastic waist and drawcord. Swoosh design trademark at lower left hem with optional player number at right. Customize with optional Nike Women's Lacrosse checker design in tonal or contrast color. Kilt does not have a built in short. Hip width: 20", Back length: 15" (size medium).

FABRIC: 100% polyester.

NEW



578436 DODGE LITE REVERSIBLE TANK

\$65.00



SIZES: XS, S, M, L, XL, 2XL

OFFER DATE: 12/01/13
END DATE: 04/01/16

Sublimated single-layer, flat-back mesh reversible tank, finished with taping at edges. Choose center or offset placement for team and player number. Customize with optional Nike Women's Lacrosse checker design in tonal or contrast design on main body, and/or contrast color on upper yoke. Jock tag sewn down at lower left front of primary side. Body width: 19", Body length: 21.75" (size medium).

FABRIC: 100% polyester.

NEW



CONTRAST PRIMARY



CONTRAST SECONDARY



SOLID PRIMARY



SOLID SECONDARY

578437 DODGE LITE SHORT

\$45.00



SIZES: XS, S, M, L, XL, 2XL

OFFER DATE: 12/01/13
END DATE: 04/01/16

Sublimated lacrosse short with elastic waist and drawcord. Swoosh design trademark at left leg hem with optional player number at right. Customize with optional Nike Women's Lacrosse checker design in tonal or contrast color. Hip width: 22.25" (size medium), Inseam length: 5" (all sizes).

FABRIC: 100% polyester.

NEW



CONTRAST



TONAL



SOLID



DIGITAL UNIFORM OPTIONS



COLOR OPTIONS



LETTER FONT OPTIONS: Height will vary based on team name.

Full Block – 1 or 2 color – (Also available in Condensed version)

ABCDEFGHIJKLMNOPQRSTUVWXYZ

Athletic Shadow – 2 color only

ABCDEFGHIJKLMNOPQRSTUVWXYZ

Bureau – 1 or 2 color

ABCDEFGHIJKLMNOPQRSTUVWXYZ

Cougars – 1 or 2 color – (Not available in Arched or Vertical Arched)

ABCDEFGHIJKLMNOPQRSTUVWXYZ

Dade Bold – 1 or 2 color

ABCDEFGHIJKLMNOPQRSTUVWXYZ

FB Rush – 1 or 2 color

ABCDEFGHIJKLMNOPQRSTUVWXYZ

Glades Bold – 1 or 2 color

ABCDEFGHIJKLMNOPQRSTUVWXYZ

NUMBER FONT OPTIONS: Height will vary by style.

Full Block – 1 or 2 color

1234567890

Athletic Shadow – 2 color only

1234567890

Bureau – 1 or 2 color

1234567890

Cougars – 1 or 2 color – (Not available in Arched or Vertical Arched)

0123456789

Dade Bold – 1 or 2 color

1234567890

FB Rush – 1 or 2 color

1234567890

Glades Bold – 1 or 2 color

1234567890

Ithaca – 1 or 2 color

1234567890

Kansas – 1 or 2 color

1234567890

Michigan State – 1 or 2 color

1234567890

Ithaca – 1 or 2 color

ABCDEFGHIJKLMNOPQRSTUVWXYZ

Kansas – 1 or 2 color

ABCDEFGHIJKLMNOPQRSTUVWXYZ

Michigan State – 1 or 2 color

ABCDEFGHIJKLMNOPQRSTUVWXYZ

Tuscon Bold – 1 or 2 color – (Also available in Condensed version)

ABCDEFGHIJKLMNOPQRSTUVWXYZ

Boulder Bold – 1 or 2 color

ABCDEFGHIJKLMNOPQRSTUVWXYZ

Script – 1 or 2 color

ABCDEFGHIJKLMNOPQRSTUVWXYZ

Script Lower Case – 1 or 2 color

abcdefghijklmnopqrstuvwxyz

Tuscon Bold – 1 or 2 color

1234567890

Morgantown – 1 or 2 color

1234567890

Boulder Bold – 3 color only

1234567890

Blacksburg – 3 color only

1234567890

Gridiron – 3 color only

1234567890

Post embellishment is not recommended with digitally printed styles.

RESPECT S/S JERSEY

See below*

SIZES: XS, S, M, L, XL, 2XL

OFFER DATE: 12/01/11
END DATE: 04/01/14

Dri-FIT single knit fabric short-sleeve game jersey. Knit mesh back panel and shoulder insets for added breathability. Unique contrast piping detail for an added feminine athletic look. Scoop neck design. Embroidered Swoosh design trademark at upper center front chest. Body width: 18", Body length: 25" (size medium).
FABRIC: Body: 94% polyester/6% spandex. Insets: 86% polyester/14% spandex.

453377	Blank	\$52.00*
330089	One-Color Standard Twill	\$82.00*
330090	Two-Color Standard Twill	\$92.00*
359555	One-Color Screen Print	\$82.00*
409637	One-Color Lightweight Stretch Twill	\$92.00*
409638	Two-Color Lightweight Stretch Twill	\$102.00*
456533	Sublimated Standard Twill	\$92.00*
456047	Sublimated Lightweight Stretch Twill	\$102.00*
466633	One-Color Embroidery (Top Line and Name Only)	\$67.00*



RESPECT RACER-BACK JERSEY

See below*

SIZES: XS, S, M, L, XL, 2XL

OFFER DATE: 12/01/11
END DATE: 04/01/14

Dri-FIT single knit fabric racer back game jersey. Knit mesh back panel and shoulder insets for added breathability. Unique contrast piping detail for an added feminine athletic look. Scoop neck design. Embroidered Swoosh design trademark at upper center front chest. Body width: 17.5", Body length: 25" (size medium).
FABRIC: Body: 94% polyester/6% spandex. Insets: 86% polyester/14% spandex.

453378	Blank	\$48.00*
330089	One-Color Standard Twill	\$78.00*
330090	Two-Color Standard Twill	\$88.00*
359555	One-Color Screen Print	\$78.00*
409637	One-Color Lightweight Stretch Twill	\$88.00*
409638	Two-Color Lightweight Stretch Twill	\$98.00*
456533	Sublimated Standard Twill	\$88.00*
456047	Sublimated Lightweight Stretch Twill	\$98.00*
466633	One-Color Embroidery (Top Line and Name Only)	\$63.00*



RESPECT KILT

See below*

SIZES: XS, S, M, L, XL, 2XL

OFFER DATE: 12/01/11
END DATE: 04/01/14

Dri-FIT poly spandex game kilt. Knit mesh side contrast inset for team color pop. Self fabric piping detail that connects with the Respect Racer-Back Jersey and/or Respect Short-Sleeve Jersey. 2" wide elastic waistband with drawcord. Kilt does not have built in short. Embroidered Swoosh design trademark on lower left hem. Hip width: 20.5", Front length: 14", Back length: 14.75" (size medium).
FABRIC: Body: 94% polyester/6% spandex. Insets: 86% polyester/14% spandex.

453379	Blank	\$45.00*
379375	One-Letter One-Color Screen Print	\$48.00*
379436	One-Letter One-Color Twill	\$50.00*
379374	One-Letter Two-Color Twill	\$52.00*
409641	One-Color One-Letter Lightweight Stretch Twill	\$51.00*
409642	Two-Color One-Letter Lightweight Stretch Twill	\$53.00*
456534	Sublimated One-Letter Standard Twill	\$51.00*
456532	Sublimated One-Letter Lightweight Stretch Twill	\$52.00*



CUSTOM UNIFORM OPTIONS



COLOR OPTIONS



EMBELLISHMENT COLOR OPTIONS *Sublimated Lightweight Stretch Twill and Embroidery only.



LETTER FONT OPTIONS: Height will vary based on team name.

Full Block – 1 or 2 color – (Also available in Condensed version)

ABCDEFGHIJKLMNOPQRSTUVWXYZ

Athletic Shadow – 2 color only

ABCDEFGHIJKLMNOPQRSTUVWXYZ

Bureau – 1 or 2 color

ABCDEFGHIJKLMNOPQRSTUVWXYZ

Cougars – 1 or 2 color – (Not available in Arched or Vertical Arched)

ABCDEFGHIJKLMNOPQRSTUVWXYZ

Dade Bold – 1 or 2 color

ABCDEFGHIJKLMNOPQRSTUVWXYZ

FB Rush – 1 or 2 color

ABCDEFGHIJKLMNOPQRSTUVWXYZ

Glades Bold – 1 or 2 color

ABCDEFGHIJKLMNOPQRSTUVWXYZ

NUMBER FONT OPTIONS: Height will vary by style.

Full Block – 1 or 2 color

1234567890

Athletic Shadow – 2 color only

1234567890

Bureau – 1 or 2 color

1234567890

Cougars – 1 or 2 color – (Not available in Arched or Vertical Arched)

0123456789

Dade Bold – 1 or 2 color

1234567890

FB Rush – 1 or 2 color

1234567890

Glades Bold – 1 or 2 color

1234567890

Ithaca – 1 or 2 color

1234567890

Kansas – 1 or 2 color

1234567890

Michigan State – 1 or 2 color

1234567890

Ithaca – 1 or 2 color

ABCDEFGHIJKLMNOPQRSTUVWXYZ

Kansas – 1 or 2 color

ABCDEFGHIJKLMNOPQRSTUVWXYZ

Michigan State – 1 or 2 color

ABCDEFGHIJKLMNOPQRSTUVWXYZ

Tuscon Bold – 1 or 2 color – (Also available in Condensed version)

ABCDEFGHIJKLMNOPQRSTUVWXYZ

Boulder Bold – 1 or 2 color

ABCDEFGHIJKLMNOPQRSTUVWXYZ

Script – 1 or 2 color

ABCDEFGHIJKLMNOPQRSTUVWXYZ

Script Lower Case – 1 or 2 color

abcdefghijklmnopqrstuvwxyz

Tuscon Bold – 1 or 2 color

1234567890

Morgantown – 1 or 2 color

1234567890

Boulder Bold – 3 color only

1234567890

Blacksburg – 3 color only

1234567890

Gridiron – 3 color only

1234567890

EMBELLISHMENT OPTIONS

- One-Color Screen Print — \$30
- Two-Color Screen Print — \$40
- One-Color Standard Twill — \$30
- Two-Color Standard Twill — \$40
- One-Color Lightweight Stretch Twill — \$40
- Two-Color Lightweight Stretch Twill — \$50
- Sublimated Lightweight Stretch Twill — \$50



616300 | NIKE SPEEDLAX 4 \$65.00

SIZES: 5-12 **OFFER DATE:** 10/1

Accessible performance for the lacrosse athlete with explosive speed.
UPPER: Lightweight synthetic provides comfort and durability. Dual pull fit system for outstanding dynamic lockdown. 3/4 upper offers support and mobility.
MIDSOLE: 3/4-length wedge Phylon midsole offers optimal mix of midfoot cushioning and support with low-profile forefoot for optimal feel and responsiveness.
OUTSOLE: TPU plate for lightweight strength. Dual-stage cleats improve drive in any direction.

100 White/Metallic Silver

NEW



616301 | NIKE AIR SPEEDLAX 4 TURF \$65.00

SIZES: 5-12 **OFFER DATE:** 10/1

Accessible performance for the lacrosse athlete with explosive speed.
UPPER: Lightweight synthetic provides comfort and durability. Dual pull fit system for outstanding dynamic lockdown. 3/4 upper offers support and mobility.
MIDSOLE: Phylon midsole with Nike Air-Sole unit for maximum comfort.
OUTSOLE: Rubber bottom destroyer traction – integrated flex zones and rubber nubs allow for lightweight traction on all turf conditions.

100 White/Metallic Silver

NEW



VAPOR CREW SOCK \$18.00

Orders accepted in increments of 6 PPK units only

SIZES: MISC **OFFER DATE:** 7/1

SHOE SIZE:XL sock = M 12-15 shoe size; L sock = M 8-12 shoe size, W 10-13 shoe size; M sock = M 6-8 shoe size, W 6-10 shoe size

SX4599-001	Black/Flint Grey/(White)	X-LARGE (M12-15)	\$18.00
SX4599-102	White/White/Black/(Black)	X-LARGE (M12-15)	\$18.00
SX4599-345	Gorge Green/Black/(Black)	X-LARGE (M12-15)	\$18.00
SX4599-401	Game Royal/Black/(Black)	X-LARGE (M12-15)	\$18.00
SX4599-410	College Navy/Black/(Black)	X-LARGE (M12-15)	\$18.00
SX4599-650	University Red/Black/(Black)	X-LARGE (M12-15)	\$18.00
SX4599-790	Sundown/Black/(Black)	X-LARGE (M12-15)	\$18.00
SX4599-801	Team Orange/Black/(Black)	X-LARGE (M12-15)	\$18.00
SX4598-001	Black/Flint Grey/(White)	LARGE (M8-12)	\$18.00
SX4598-102	White/White/Black/(Black)	LARGE (M8-12)	\$18.00
SX4598-345	Gorge Green/Black/(Black)	LARGE (M8-12)	\$18.00
SX4598-401	Game Royal/Black/(Black)	LARGE (M8-12)	\$18.00
SX4598-410	College Navy/Black/(Black)	LARGE (M8-12)	\$18.00
SX4598-650	University Red/Black/(Black)	LARGE (M8-12)	\$18.00
SX4598-790	Sundown/Black/(Black)	LARGE (M8-12)	\$18.00
SX4598-801	Team Orange/Black/(Black)	LARGE (M8-12)	\$18.00
SX4692-001	Black/Flint Grey/(White)	MEDIUM (M6-8, W6-10)	\$18.00
SX4692-102	White/White/Black/(Black)	MEDIUM (M6-8, W6-10)	\$18.00
SX4692-401	Game Royal/Black/(Black)	MEDIUM (M6-8, W6-10)	\$18.00
SX4692-650	University Red/Black/(Black)	MEDIUM (M6-8, W6-10)	\$18.00

NEW DRI-FIT

ENGINEERED TO THE EXACT SPECIFICATIONS OF CHAMPIONSHIP ATHLETES



NIKETEAM.COM

